

Conceptualizing & Designing Multimedia and Online Modules



Dr Mike Keppell

Head, Centre for Integrating Technology in Education
Hong Kong Institute of Education

My background

- Instructional design
- 300 projects in diverse content areas
- Conceptualizing projects
- Interacting with content experts
- Authentic cases
- Problem-based, project-based learning
- Online communities



Your background

- Academic department?
 - Multimedia/visualization project?
 - Online project?
 - Full subject?
 - Partial subject (1 hour, 1 week, 2-3 weeks)?
-
-



Screen Captures from Completed Projects which use 3D Environments



[Click here for help](#)







Patient Records

- patient information
- medical history
- height & weight
- dental history
- social history

Visuals

Clinical slides

- Left maxillary occlusal
- Right maxillary occlusal
- Maxillary occlusal A
- Maxillary occlusal B
- Left mandibular occlusal
- Right mandibular occlusal
- Lower anterior

Radiographs

- Left BW
- Right BW
- OPG

Telephone

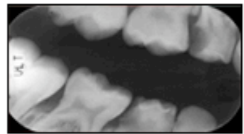
- Call
- specialist
- teacher
- psychologist

Navigation

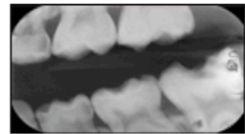
- go to office
- help

exit

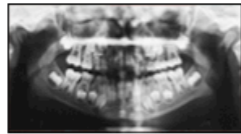
back ◀



Right BW



Left BW



OPG

back ◀



Right max occlusal



Left max occlusal



Max occlusal



Max occlusal 2



Right mand occlusal



Lower anterior



Left mand occlusal



Reception Area

See the receptionist about your appointment.







A blue spiral-bound notebook with the text centered on the cover.

**Learning Tools
Embedded in the
Multimedia
Environment**

ABCDEFGHIJKLMNOPQRSTUVWXYZ A-Z **glossary**

Term: **Abnormal Pap test**
About 1 in 10 Pap tests show an abnormality. This may be caused by infections, inflammation, or abnormal cell growth.

- Abnormal Pap test
- Aceto-white
- Aged standard rate
- AHW
- AICHS
- Atrophic vaginitis
- Atypia

- Age Standardized Rate
- Australia
- New Zealand
- United Kingdom
- U.S.A.

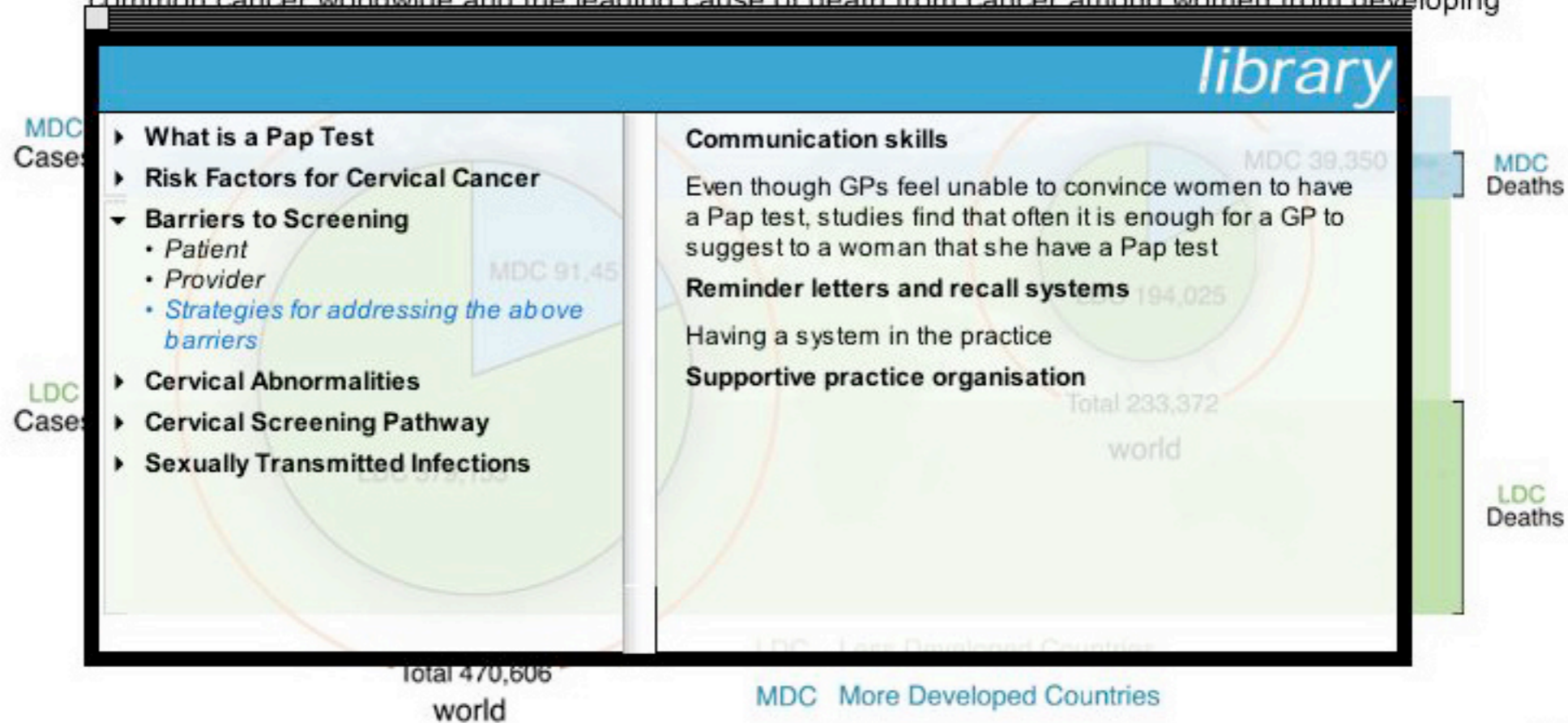
- Iceland
- Finland
- East Africa
- Melanesia
- South Eastern Asia



International Perspective

As you work through the module keep in mind that **screening**, if completed regularly will help prevent most cases of **cervical cancer**.

However, organised approaches to screening vary throughout the world. Cervical cancer is the third most common cancer worldwide and the leading cause of death from cancer among women from developing



results slip

To be kept by the practitioner:



Cytology Service Incorporated

730 John St, Labville, 9073
PO Box 123 Labville South
Telephone: (09) 2344 6788 Facsimile: (09) 2344 6789

This is a fictitious company created for this program.

This is a... but low, probability of error. A negative report indicates low probability of cervical pathology within the next 2 years. Your patient should be reminded to consult you immediately she experiences any new symptoms.

Report No: PT456872

Requesting Practitioner:

Date collected: 14 June

Dr BRADLEY
MEDICLINIC

b **i** **u** save print **note book**

The screening test has a low probability of error.

CYTOLOGY - Cervix
NEGATIVE - No abnormal
The sample appears to be
No evidence of dysplasia o
Endocervical component

The tear-out section below can assist



Online Discussion

Announcements

Course Information

Staff Information

Course Material

Assignments

Communication

External Links

Tools

Course Map

Control Panel

Discussion Board

 Add Forum

- 1 [What is your theory of learning and teaching?](#) Modify Remove
Provide a personal description of your own theory of teaching and learning. Why have these strategies worked? Why is it important that we understand our own theory of teaching and learning? [47 Messages]
[All read]
Write at least four to five sentences to explain your viewpoint.
- 2 [Portals, Networks, Interest Groups, Communities - What's the Difference?](#) Modify Remove
Stuckey, Lockyer and Hedberg (2001) suggest that these structures are different in what they offer online learners yet they are often used interchangeably with 'community' [57 Messages]
[All read]
Find an example of each of the four types and write 2 sentences about each one.
- 3 [Discuss the benefits of creating a prototype of a virtual learning community before implementation.](#) Modify Remove
Find a definition of prototype on the internet and include the URL in your response for others to view. [13 Messages]
[All read]

A blue spiral-bound notebook with the text centered on the cover.

**Developing
Innovative Projects?**

Content experts/developers

- Being aware of epistemological beliefs
- Bain, McNaught & Mills (1998) suggest that academics differed on a wide range of beliefs about knowledge which influenced the methods used in their teaching.
- These beliefs also influenced the creation of technology-enhanced teaching and learning resources.

Jonassen & Land (2000)

Instruction

Student-centred learning environments

transmission, acquisition

interpretation, construction

mastery, performance

meaning making

external reality

internal reality

abstract, symbolic

contextualized, authentic, experiential

individually interpreted

socially negotiated, co-constructed

individual

collaborative

encoding, retention, retrieval

articulation and reflection

symbolic reasoning

situated learning

psychology

anthropology, sociology, ethnography

laboratory

in situ

well-structured

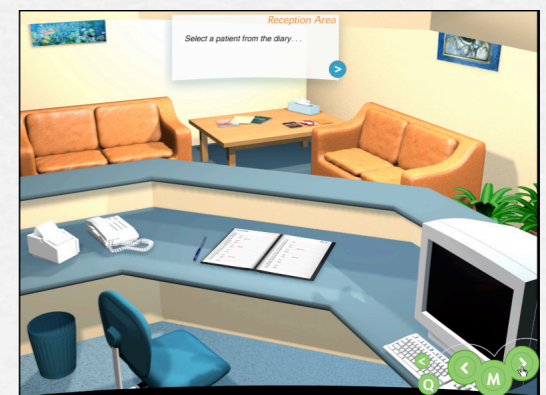
ill-structured

decontextualized

embedded in experience

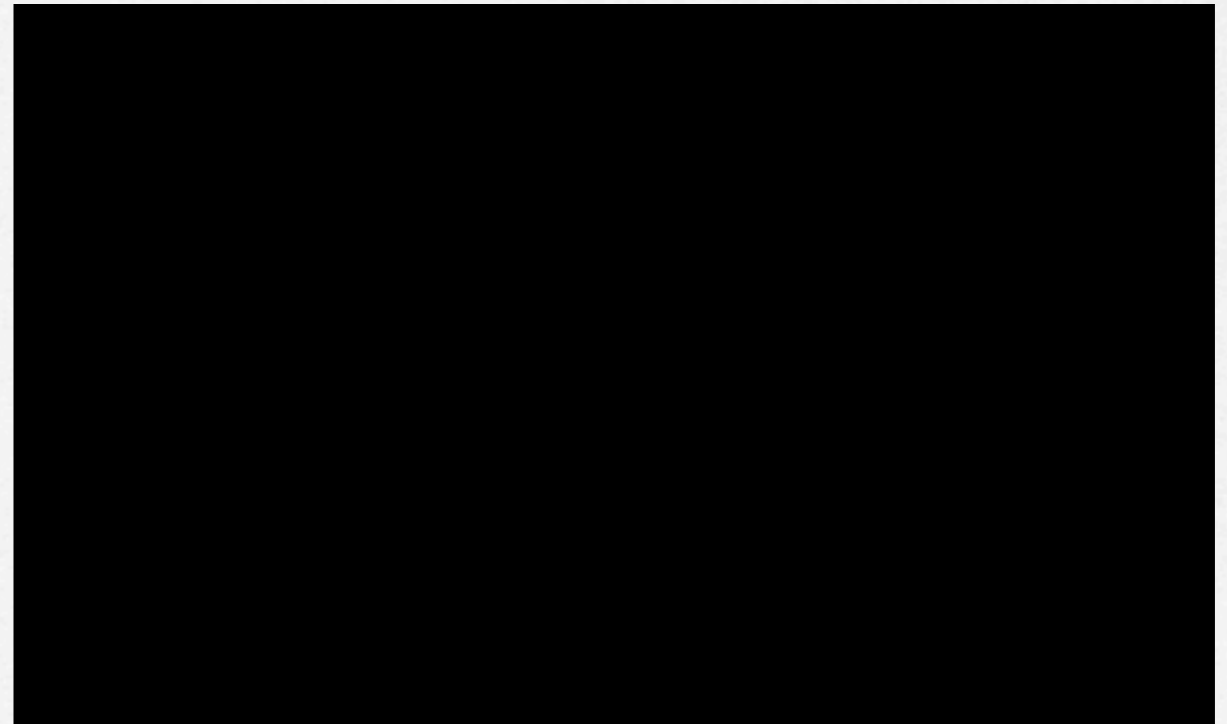
Implicit assumptions

- ❑ Product assumption - focus is on obtaining an 'end-product'
- ❑ Prescriptive focus - prescribe advice which may be accepted
- ❑ Collaborative focus - mutually agreed goal



Media affordances

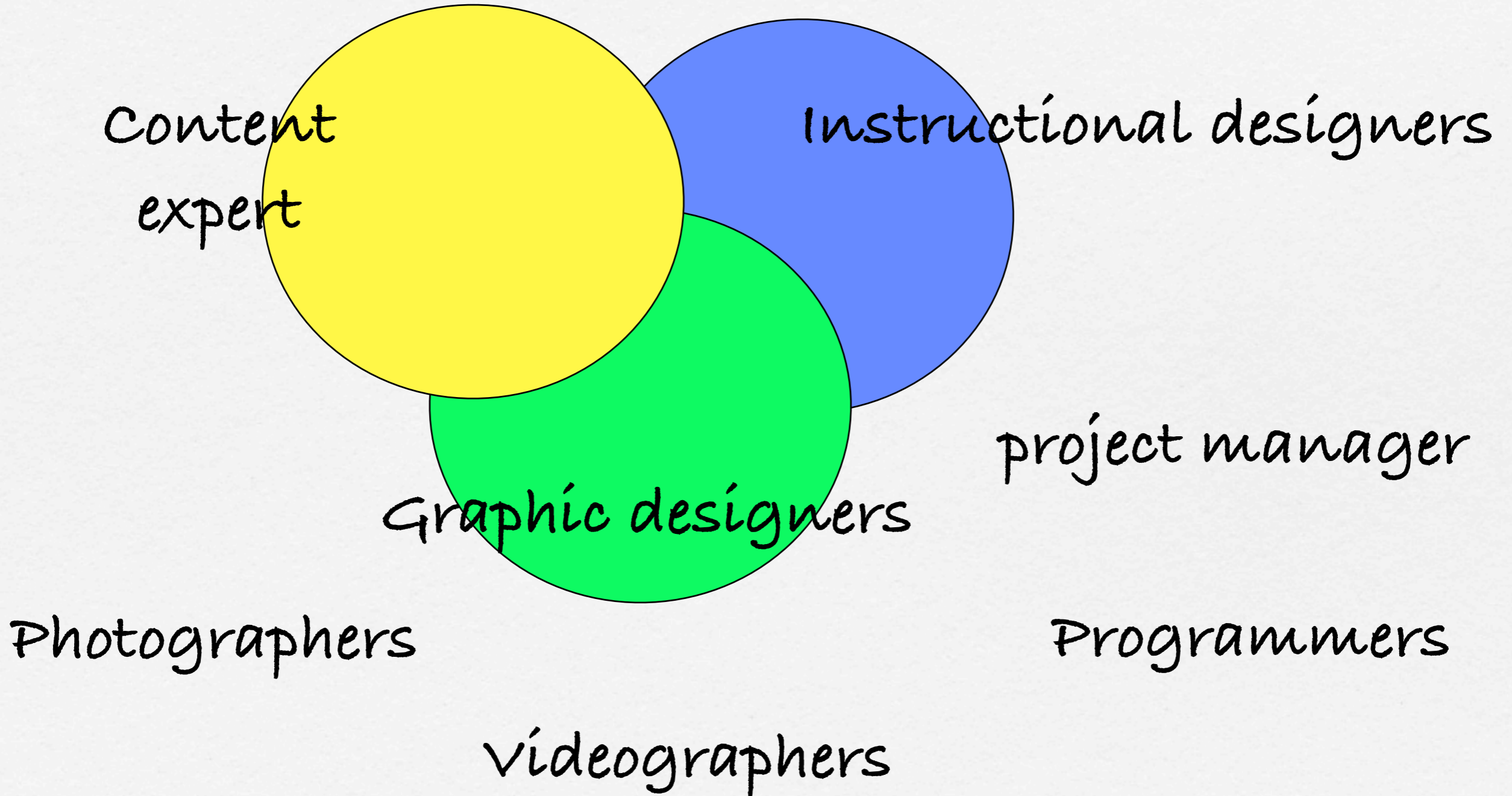
- Photographs?
- Video?
- Animations?
- Multimedia?
- Online?

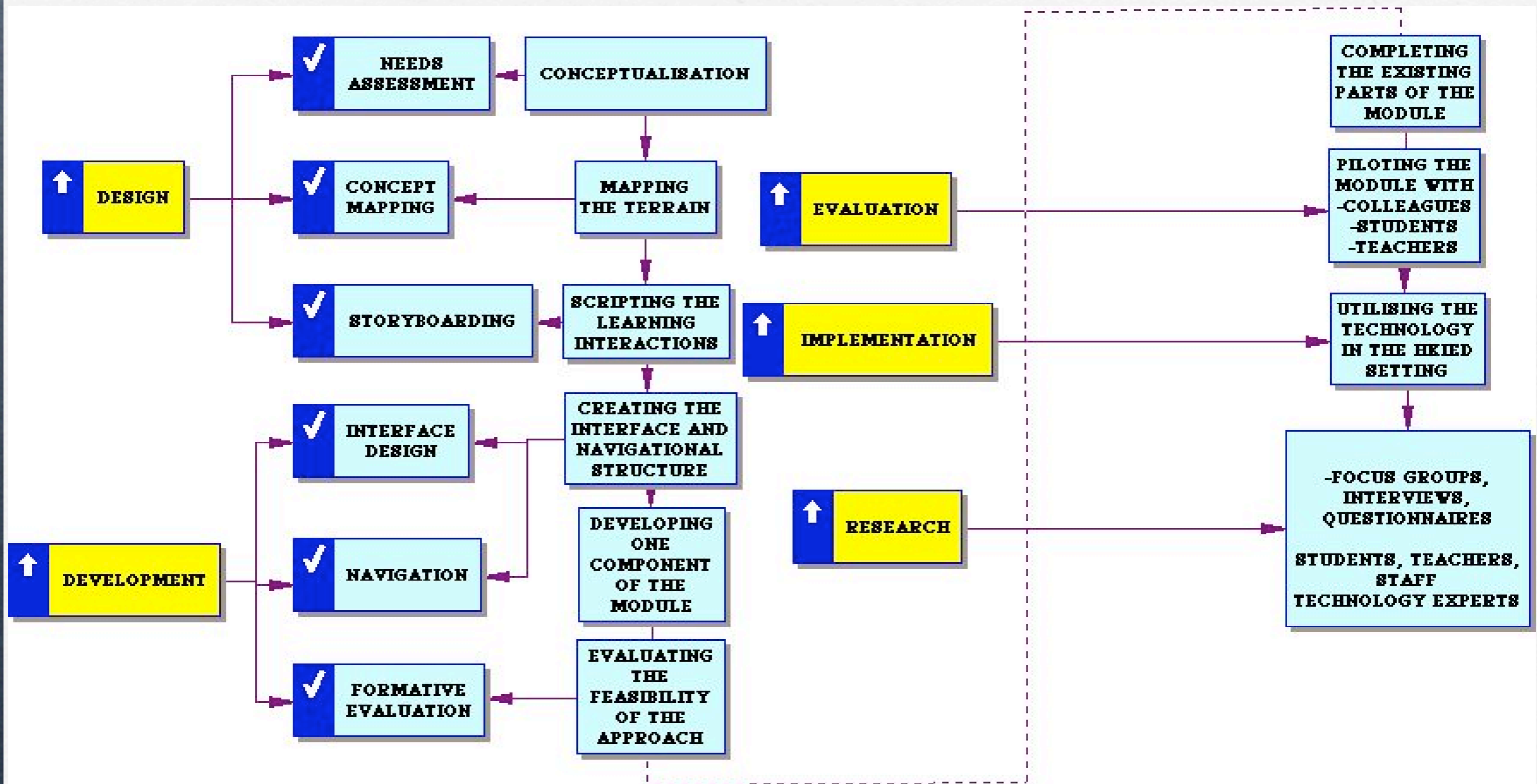


Underestimating the time required

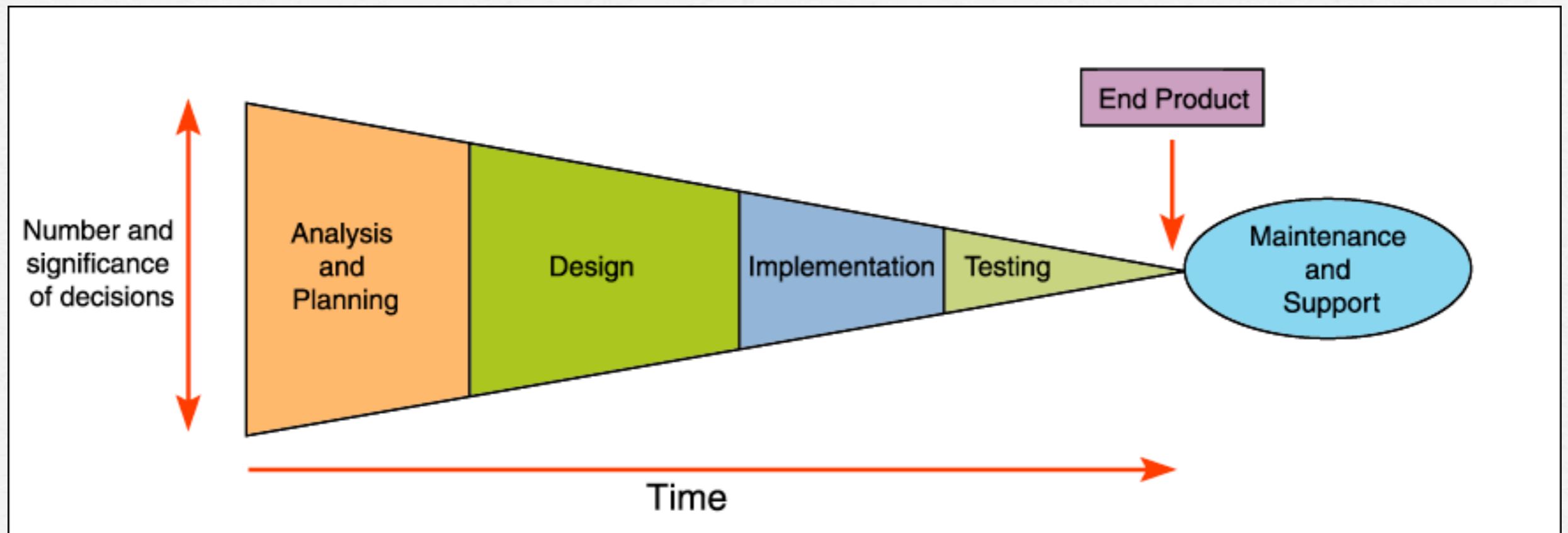
- Multimedia - 300-500 hours per hour
- Focus on complex and difficult content or misconceptions
- Can this be completed using another teaching method?

Completing projects in a team-based environment





Project Decisions



(Strauss, (1997) Managing
Multimedia Projects, p.95)

Communities of practice

"Groups of people who share a concern, a set of problems, or a passion about a topic, and who deepen their knowledge and expertise in this area by interacting on an ongoing basis"

(Wenger, McDermott, Snyder, 2002, p.4).

"Learners inevitably participate in communities of practitioners and that the mastery of knowledge and skills requires newcomers to move toward full participation in the sociocultural practices of the community" (Lave & Wenger, 1991, p.29).

In this process - newcomers become part of a community of practice

Questions?